



# SPACE-RAY®

## EPAL-IP55 – Push Burner Poultry Linear Radiant Tube Heaters

Model rating: EPAL-IP55 25, EPAL-IP55 30, EPAL-IP55 38  
and EPAL-IP55 45. *Also available in IP20*



[www.spaceray.co.uk](http://www.spaceray.co.uk)

*IP55 Stainless Steel Burner  
No CO2  
TISS™ Safety System*

Both Single and 2-Stage  
Models Available

- Can be flued to eliminate CO2 emissions in the house
- Fully enclosed Stainless Steel IP55 burner box, complete with fresh air flexible connector, clips and outlet screen
- Efficient and cost saving heating method WITH FUEL SAVINGS UP TO 25% VS WARM AIR
- Single Stage and Two Stage Modulating Inputs available
- Push Through System (Positive Pressure)
- Heat Treated Aluminised Calorised emitter tube surface – for flake free, safer and cleaner working environment
- Tube Integrity Safety System (TISS™)
- Lightweight construction – supplied in 3m sections – easy to assemble and fit

SPACE-RAY®





# SPACE-RAY

## SPECIFICATION GUIDE - EPAL-IP55 SERIES Linear Tube Heater

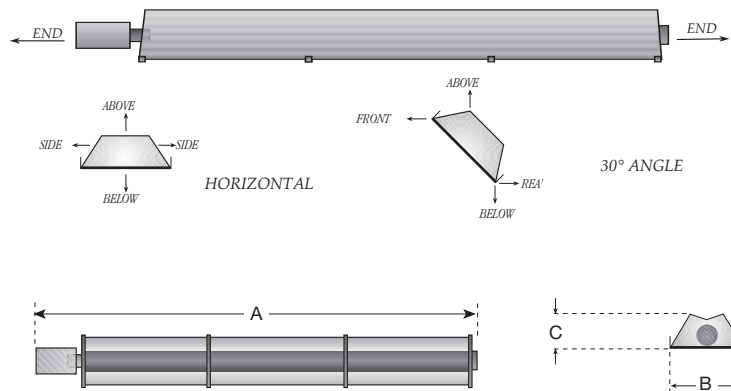
Model No.	EPAL-IP55 25	EPAL-IP55 30	EPAL-IP55 38	EPAL-IP55 45
Heat Input, kW Hs	25.00	30.00	36.60	45.00
Min. kW Hs-2 stage	17.00	21.05	25.60	30.80
Heat Input, kW Hi	22.50	27.00	33.00	40.50
Min. kW Hi-2 stage	15.30	18.05	23.00	27.70
Weight	80Kg		97Kg	
Length m - A	9.5		12.55	
Width mm - B	330			
Height mm - C	370			
Gas Connection	R - 1/2			
Supply Pressure	Natural Gas - G20 20mbar Propane - G31 37mbar			
Electrical Supply	230v~50Hz 90W, Current rating 0.39A, fuse externally 3A			
Flue Diameter	100mm Dia.			
Air Inlet Connection	101.6mm Dia.			
NOx class	3	3	1	3

## MINIMUM CLEARANCES TO COMBUSTIBLE MATERIAL - MM

Model No.	SIDE	ABOVE	BELOW	END	FRONT	REAR
EPAL-IP55 25	710	150	1520	380	1320	30
EPAL-IP55 30	710	150	1780	380	1470	30
EPAL-IP55 38	860	150	1930	510	1680	30
EPAL-IP55 45	860	150	2060	510	1780	30



IP55 rated Stainless Steel burner box and fan



# SPACE-RAY®

For more information contact:

Distributor/Agent:

Gas Fired Products (UK) Ltd, Chapel Lane, Claydon, Ipswich, Suffolk IP6 0JL UK  
Telephone: (01473) 830551 Fax: (01473) 832055 Email: info@spaceray.co.uk Website: www.spaceray.co.uk

We reserve the right to alter specifications without prior notice.

**FACTORIES: ■ IPSWICH, ENGLAND ■ CHARLOTTE, N.C., U.S.A.**