



# SPACE-RAY®

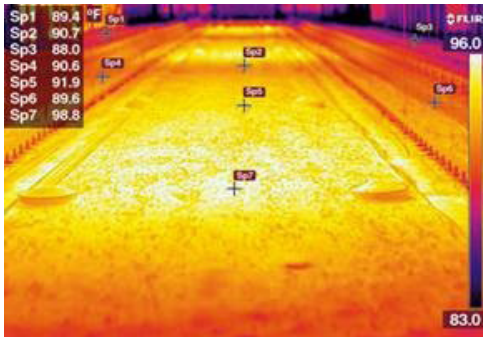
## EBF-IP55 BIG FOOT Poultry Radiant Tube Heater

Model rating: EBF20-IP55 – 20kW & EBF25-IP55 – 24kW  
Also available in IP20



[www.spaceray.co.uk](http://www.spaceray.co.uk)

IP55 Stainless Steel Burner  
No CO2  
Unique Heat Pattern



Infrared Photography  
Shows The **Big Foot™** Radiant  
Tube Brooder's Large, Even Heat  
Pattern At Litter Level

**Big Foot's unique design produces a large rectangular heat pattern**

- Can be flued to eliminate CO2 emissions in the house
- Fully enclosed Stainless Steel IP55 burner box, complete with fresh air flexible connector, clips and outlet screen
- Efficient and cost saving heating method WITH FUEL SAVINGS UP TO 25% VS WARM AIR
- Big foot's unique design produces a large rectangular heat pattern which matches shape of poultry house
- 19° optimised reflector angle which minimises convective wash, giving better radiant throw for even temperature distribution, thus promoting improved bird growth



SPACE-RAY®



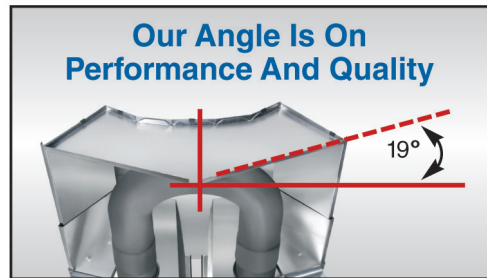
# SPACE-RAY

## SPECIFICATION GUIDE – EBF-IP55 - SERIES

Model No.	EBF 20 - 4.5	EBF 20 - 6	EBF 25 - 6
Heat Input, kW Hs	20.00		24.00
Min. kW Hs-2 stage	14.00		16.70
Heat Input, kW Hi	18.00		21.60
Min. kW Hi-2 stage	12.60		15.10
Weight	57Kg	70kg	70kg
Length m - A	3.04	3.79	3.79
Width mm - B	650		
Height mm - C	370		
Gas Connection	R - 1/2		
Supply Pressure	Natural Gas - G20 20mbar		Propane - G31 37mbar
Electrical Supply	230v~50Hz 90W, Current rating 0.39A, fuse externally 3A		
Nox Class	3		
Min. recommended	3		
Mounting height - m	2.7		
Flue Diameter	100mm Dia.		
Air Inlet Connection	101.6mm Dia.		



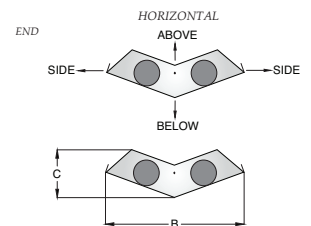
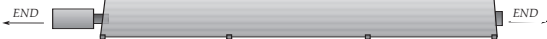
IP55 rated Stainless Steel burner box and fan



The reflector angle of Space-Ray's Big Foot Radiant Tube Brooder was engineered to an optimum angle of 19° to minimize convective wash. This produces a large, even heating footprint.

## MINIMUM CLEARANCES TO COMBUSTIBLE MATERIAL - MM

Model No.	EBF 20 - 4.5	EBF 20 - 6	EBF 25 - 6
SIDE	560		710
ABOVE	150		
BELOW	1520		
END	380		



# SPACE-RAY®

For more information contact:

Distributor/Agent:

Gas Fired Products (UK) Ltd, Chapel Lane, Claydon, Ipswich, Suffolk IP6 0JL UK  
Telephone: (01473) 830551 Fax: (01473) 832055 Email: info@spaceray.co.uk Website: www.spaceray.co.uk

We reserve the right to alter specifications without prior notice.

**FACTORIES: ■ IPSWICH, ENGLAND ■ CHARLOTTE, N.C., U.S.A.**