



SPACE-RAY®

SRB40 CE - No. 9

Pilot Ignition Brooder

- 12.kW
- Electrical supply not required
- Integrated Gas Valve and Thermostat
- Unique 60° 'Angled' Stainless Steel Insulated Emitter - Larger Surface Area efficiently delivers heat directly to the birds - Enclosed insulation will not crumble or distort
- Low Maintenance Pilot Assembly
- Unique 'Quick Adjust' 'Low Profile' hanging bracket - raises the brooder closer to the roof when not in use
- Propane and Natural Gas
- 'Spun' Aluminium Canopy - maximises downward heat effect
- Stainless steel Pilot Assembly
- Durable stainless steel gas line from the gas valve to the main burner
- Average number of birds per SRB40 CE Pilot Brooder

Broilers	2000 - 3000	Pullets	1500 - 2000
Pheasants	1500 - 2000	Ducks	750 - 1000
Turkeys	750 - 1000		
- CE Approved



Patented WindBuster™ Pilot

The Wind Buster Pilot System not only enhances flame stability but provides dependable ignition for virtual trouble-free operation, even with speeds up to 7mph (11.2km).



Maintenance Friendly

The main burner jet is quickly accessed by sliding back the quick release bracket shown above.



SPACE-RAY®

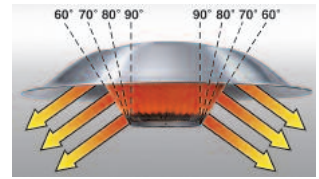


SPACE-RAY®

SPECIFICATION GUIDE - SRB40 CE No.9 Pilot Ignition

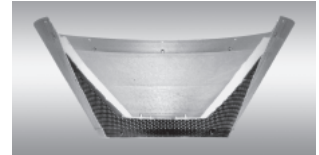
INPUT RATING		12kW
STOCK CAPACITIES:	Broilers	2000 - 3000
	Pullets	1500 - 2000
	Turkeys	750 - 1000
	Ducks	750 - 1000
	Pheasants	1500 - 2000
MOUNTING HEIGHT		1520mm - 1830mm (60in - 72in)
BROODER SPACING	(Maximum)	12.2m 40ft
REFLECTOR DIAMETER		890mm 35in
BROODER HEIGHT		460mm 18in
BROODER WEIGHT	(Approximate)	12.0kg 26lbs
SHIPPING WEIGHT	(Approximate)	18.0kg 39lbs
GAS CONSUMPTION	(Maximum Full Heat)	
PER HOUR	Propane	0.43 GPH 10.88kg/hr
	Natural	0.40 Therm 1.15m ³ /hr
MINIMUM CLEARANCE	Side	915mm 36in
TO COMBUSTIBLES	Below	1220mm 48in
	Top	460mm 18in
Ventilation Requirement	Refer to Installation Instructions	

**60° Emitter Angle
Optimises Heat Pattern**



The Space-Ray Unique 60° Emitter Angle is specifically designed to aim the radiant heat directly at the birds where it's needed most.

Enclosed Emitter Assembly



The enclosed insulation will not crumble or distort and is designed to withstand the tough operating conditions found in poultry houses. The unit features a 3-year limited warranty.

Radiant Heat V.S. Forced Air



Radiant heat helps keep the litter area dry and warms the birds directly, saving fuel.



Space heaters force the heated air to the upper areas of the house first, then to the floor area.

ANCILLARY EQUIPMENT

Gas Hose - Standard or Heavy Duty	3.0m 10ft
Gas Tap	(R ³ /8) 3/8 in BSP external

ALL MODELS	SUPPLY PRESSURE TO HEATER	BURNER SETTING PRESSURE
U.K.	Natural Gas 12mbar to 35mbar	10mbar
	Propane Gas 37mbar to 50mbar	25mbar
EXPORT	Details of gas characteristics and supply pressure to be advised by customer	



SPACE-RAY®

For more information contact:

Distributor/Agent:

Gas Fired Products (UK) Ltd, Chapel Lane, Claydon, Ipswich, Suffolk IP6 0JL UK

Telephone: (01473) 830551 Fax: (01473) 832055 Email: info@spaceray.co.uk Website: www.spaceray.co.uk

We reserve the right to alter specifications without prior notice.

FACTORIES: ■ IPSWICH, ENGLAND ■ CHARLOTTE, N.C., U.S.A.